



THE CLOVER CONNECTION



The official monthly newsletter of Wyandotte County 4-H

By Casey Ling, 4-H Youth Development Extension Agent



In this month's newsletter:

- **County Club Days Date and Info**
- **Cake Decorating Class**
- **Rabbit Project**
- **4-H Websites**
- **Updated Kansas 4-H Policy book**
- **Updated Horse Show Rule book**
- **Livestock Judging Clinic and Contest**
- **K-State Junior Swine Producer Day**
- **K-State Junior Meat Goat Producer Day**
- **HPAI info from the KDA**



County Club Day

County Club Day is a judged event that gives participants an opportunity to tell others about their 4-H projects and demonstrate their talents and abilities. Presentations such as talks, demonstrations, speeches, skits, music and dance are judged and awarded ribbons. 4-Hers who qualify at the county level are eligible to compete at the Regional Club Days. More info about Club Days can be found [here](#). This year Wyandotte 4-H will be partnering with Leavenworth 4-H for the County Club Days event.

When: February 2nd, 2025

Where: Lansing Intermediate School
509 Ida St Lansing, KS 66043

The sign up link will be sent out in January.



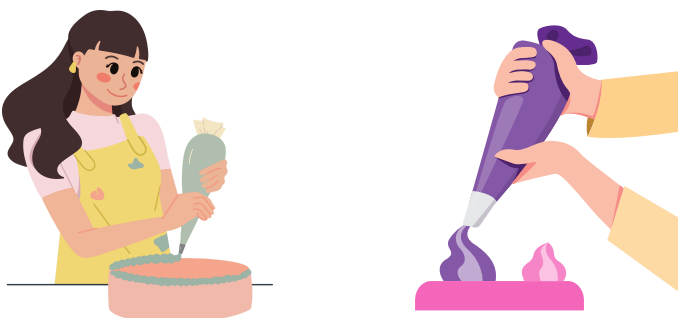
Cake Decorating Class

The WyCo Extension Office is hosting another cake decorating class in 2025! Heather Chronister, a county fair foods division judge, will be coming back for Cake Decorating 102. This class will cover the basic techniques of piping, then move into more advanced decorations such as creating flowers and other designs. This class is first timer and beginner friendly! All youth and adults are welcome to attend.

When: January 11, 2025
10am-12pm

Where: WyCo Extension Office

To sign up email Lori Wuellner at lwuellne@ksu.edu



Rabbit Project

If you are interested in learning more about raising or showing rabbits, you are in luck! The Wyandotte 4-H program has a new rabbit project leader, Renee Foster. Mrs. Renee has been busy preparing the rabbit project for the new 4-H year and is excited to share her enthusiasm with the 4-Hers.

Join the new Facebook page Wyco Hoppin' Dottes for the latest updates! Multiple show rabbits have been donated to the 4-H program and are available for lease.

To get involved with the rabbit project, be sure to enroll in the rabbit project on 4-H Online and contact Mrs. Renee at mrsfoster7@gmail.com.



4-H Websites

There are several online resources to help keep you up to date with what's going on in the 4-H program. Check them out to learn about upcoming events, learning opportunities, and contests.

WyCo Extension/4-H Office website- www.wyandotte.k-state.edu

Kansas 4-H website- www.kansas4-h.org/

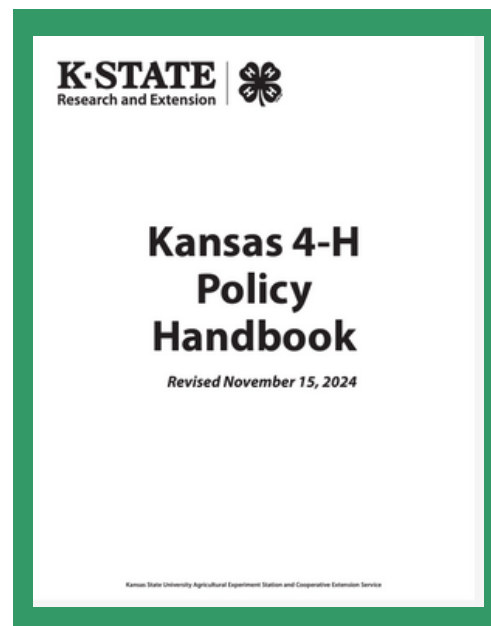
Wyandotte County 4-H Facebook Page

Kansas 4-H Facebook Page



Updated Kansas 4-H Policy Book

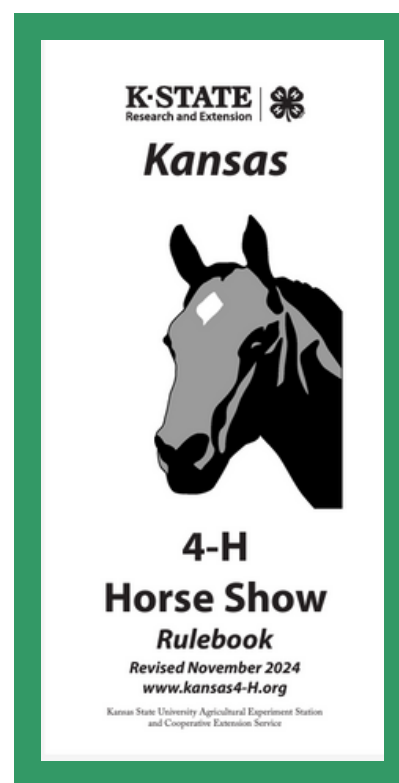
The Kansas 4-H Policy Handbook has been updated and is available on the Kansas 4-H website. An additional document outlining all of the updates has been posted on the website as well. These documents may be found [here](#) or at <https://www.kansas4-h.org/resources/policy-guide/index.html>.



Update Horse Show Rule Book

The updated Kansas 4-H Horse Show Rule book is now available. If you are planning to show a horse at the county or state fair, be sure to look it over. There are updates to the horse ID form, due dates, patterns, and more!

To view the rule book, click [here](#) or go to https://bookstore.ksre.ksu.edu/pubs/kansas-4-h-horse-show-rulebook_S133.pdf



The Elite Livestock Judging Clinic and Contest

Saturday December 7th 2024

*Leavenworth County Fairgrounds
Tonganoxie, KS*

*Come learn livestock evaluation from Butler County
Community College Livestock Judging Team*

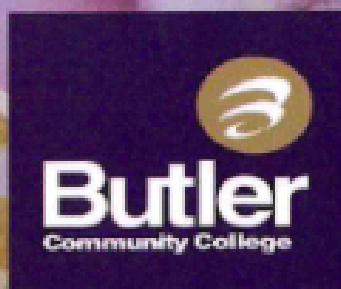
*New this year will be meats identification training
hosted by KSU Meats Science Department*

*Follow us on Facebook for more info
Leavenworth County Livestock Committee*

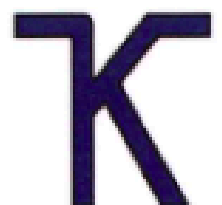
Leavenwoth County



LivestockCommittee



Kansas State University



Animal Sciences and Industry



K-STATE
Research and Extension

2025 K-State Junior Swine Producer Day



Join us on Saturday, March 1, 2025 for the biennial K-State Junior Swine Producer Day at the Stanley Stout Center in Manhattan. This educational event will be a fun-filled day in which youth, parents, agents, ag teachers, and swine project leaders can increase their knowledge of youth swine projects. Presentations will be provided by K-State faculty members, graduate students, former exhibitors, and guest speakers. All ages and skill levels are invited! Participants will receive a K-State Show Pig Guide, t-shirt, and complimentary lunch. Only those who register by February 5 will receive a t-shirt. The registration fee is \$20/person for those who sign up by the registration deadline, or \$25/person after that date. Registration is limited to 400 attendees, on a first come, first served basis. This is a family event! Anyone attending must register, including all youth and adults.

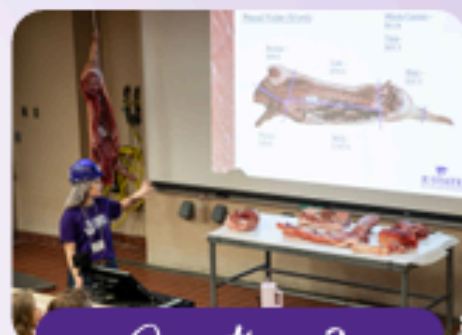
March 1



Tentative Schedule



Registration



Questions?

Joel DeRouchey
jderouch@ksu.edu
785.532.2280

Lexie Hayes
adhayes@ksu.edu
785.532.1264

- 8:00AM Registration Opens
- 9:00AM Welcome
- 9:15AM Project Selection
- 10:00AM Breakout Sessions
 - Nutrition, Meats, Facilities & Equipment, Breeds & Ear Notching
- 12:00PM Lunch
- 12:45PM Health
- 1:30PM Breakout Sessions
 - Showmanship, Daily Care & Clipping, Show Day Prep, Resources
- 3:00PM Wrap-up
- 3:30PM YQCA Training (optional)

- ✔ \$20/person by February 5
- ✔ \$25/person after February 5
- ✔ Late registrants will not receive a t-shirt.
- ✔ All attendees must register, including youth, parents, and adults.
- ✔ No refunds.
- ✔ Attendance is limited to the first 400 participants to register.

Register By February 5

Limited Attendance

Location
Stanley Stout Center

Register Online
<https://commerce.cashnet.com/KSUASIND>



Scan Me!

K-State, County Extension Councils, Extension Districts, and U.S. Department of Agriculture Cooperating. All educational programs and materials available without discrimination on the basis of race, color, religion, national origin, sex, age, or disability.

K-State Research and Extension and the Department of Animal Sciences & Industry, or their assignees, reserve the right to photograph, record the image and/or voice of participants for future research, educational, or promotional purposes. By attending, you provide consent to the above items and waive all rights to claims for payment or royalties in connection with any use of said images or recordings, unless you notify event organizers you withhold consent, in writing, prior to the event.

K-State Junior

MEAT GOAT PRODUCER DAY

3.22.25

Event

Join us on Saturday, March 22, 2025 for the biennial K-State Junior Meat Goat Producer Day at the Stanley Stout Center north of the K-State campus in Manhattan. This educational program will be a fun-filled day in which youth, parents, agents, ag teachers, project leaders, and volunteers can increase their knowledge of youth meat goat projects. Presentations will be provided by K-State faculty members, graduate students, former exhibitors, and guest speakers. All ages and skill levels are invited! Participants will receive a K-State Meat Goat Show Guide, t-shirt, and complimentary lunch. Only those who register by the deadline on February 26 will receive a t-shirt. The registration fee is \$20/person before February 26 and \$25/person after the deadline. This is a family event! Anyone attending must register, including all youth, parents, and adults. Registration is limited to 400 participants, filled on a first come, first serve basis.

K-State, County Extension Councils, Extension Districts, and U.S. Department of Agriculture Cooperating. All educational programs and materials available without discrimination on the basis of race, color, religion, national origin, sex, age, or disability.

Registration

- 1. \$20/person by February 26
- 2. \$25/person after February 26
- 3. Late registrants will not receive a t-shirt.
- 4. All attendees must register, including youth, parents, & adults.
- 5. No refunds
- 6. Attendance is limited to the first 400 participants to register.



Scan me!

Questions?

Lexie Hayes
adhayes@ksu.edu
785.532.1264

Tentative Program

Friday, March 21
5:00-7:00PM *Optional Tour*
Sheep & Meat Goat Center

Saturday, March 22
8:00AM Check-in
9:00AM Welcome
9:15AM Selection
10:00AM Breakout Sessions
-Nutrition
-Facilities & Equipment
-Doe Management & Kidding
11:15AM Health & Wellness
12:00PM Lunch
1:00PM Breakout Sessions
-Showmanship
-Reproduction
-Clipping & Grooming

3:15PM Wrap-up
3:30PM YQCA Training (*optional*)
4:00-6:00PM *Optional Tour*
Sheep & Meat Goat Center

Register Online

<https://commerce.cashnet.com/KSUASIND>

By
February 26

HPAI:

Highly Pathogenic Avian Influenza

Highly pathogenic avian influenza, or HPAI, is a rapidly spreading viral disease that can infect many types of birds. Avian influenza, often called avian flu or bird flu, can be common, but some strains are highly pathogenic, which means they are more deadly. Introduced by migrating wild birds, HPAI can spread through spring migration and affect **all** domestic poultry — small and backyard flocks as well as commercial industries.

Poultry with HPAI **do not** survive the illness. Vaccines for HPAI are not readily available.

Signs of Avian Influenza

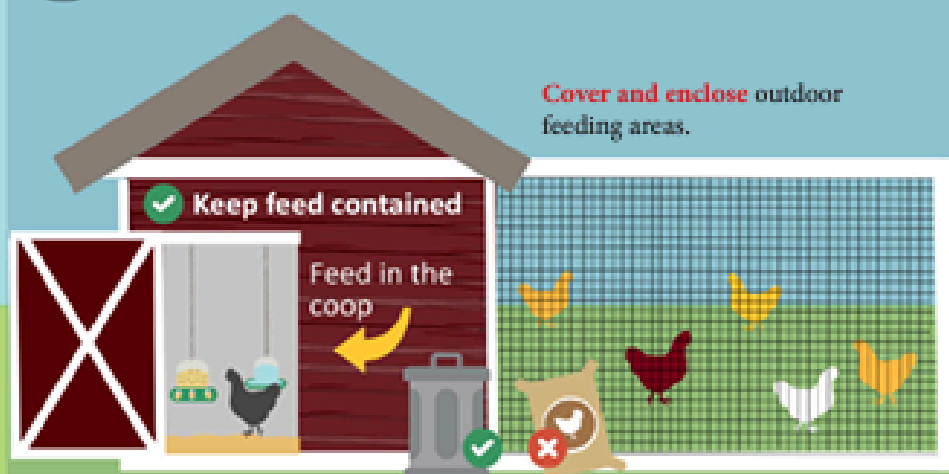
- Coughing and sneezing
- Difficulty breathing
- Extreme depression
- Lack of energy
- Decrease in feed or water intake
- Swelling or purple discoloration of head, eyelids, comb, wattle and legs
- Decrease in egg production
- Sudden unexplained death

Biosecurity is your best option to prevent HPAI from entering your small or backyard poultry flock.

Here is what you can do:

Protect Your Small Flock from Avian Influenza

1 **Avoid** attracting wild birds and waterfowl to your home or farm. Song birds, sparrows, starlings, etc. are **low risk**.



Cover and enclose outdoor feeding areas.

Clean up feed spills.

Reduce puddles and standing water.

Avoid visiting ponds and streams, especially with pets.

Do not move birds from farm to farm.

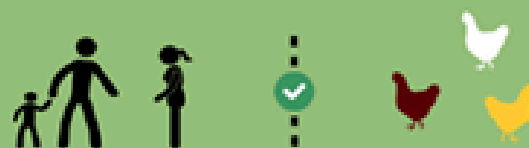
Isolate new birds.

2 **Limit** or **halt** travel with your birds to sales, shows and swaps.

Ensure you have clean hands, clothes, and footwear before handling your birds if you attend events. **Do not** allow others to handle your birds.



3 **Limit** your birds' visitors. If someone must visit your birds: discuss where they have been. Have them wash their hands and wear clean clothes and footwear.





Have a star 4-Her that deserves recognition?

Have a picture from a project meeting or 4-H event that you would like to share with the community?

Let us know! Email csling@ksu.edu



To make the best better!



K-STATE
Research and Extension

Wyandotte County

K-State Research and Extension is committed to providing equal opportunity for participation in all programs, services and activities. Program information may be available in languages other than English. Reasonable accommodations for persons with disabilities, including alternative means for communication (e.g., Braille, large print, audio tape, and American Sign Language) may be requested by contacting the event contact Casey Ling two weeks prior to the start of the event (2 weeks before event) at (csling@ksu.edu or 913-299-9300). Requests received after this date will be honored when it is feasible to do so. Language access services, such as interpretation or translation of vital information will be provided free of charge to limited English proficient individuals upon request.